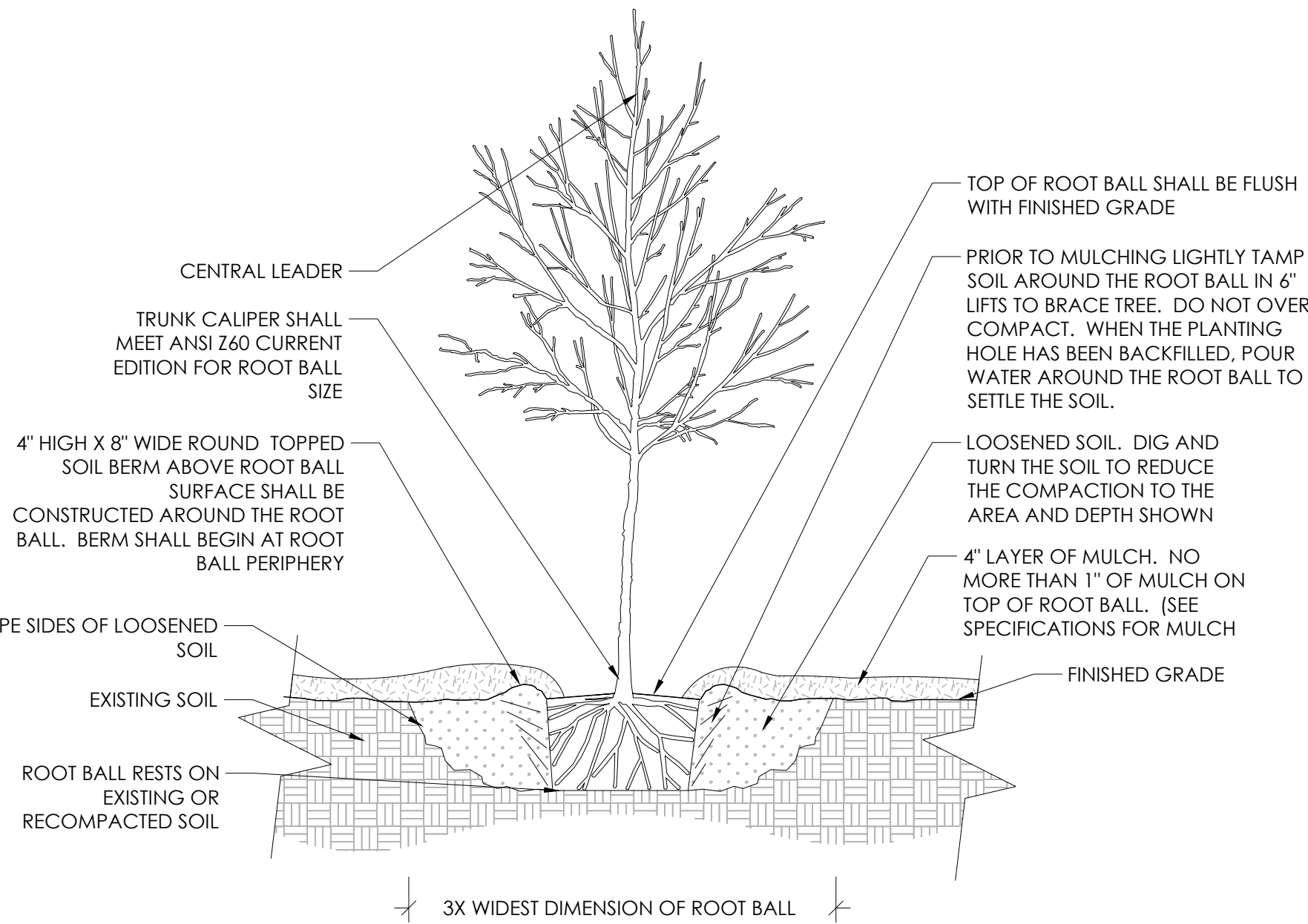
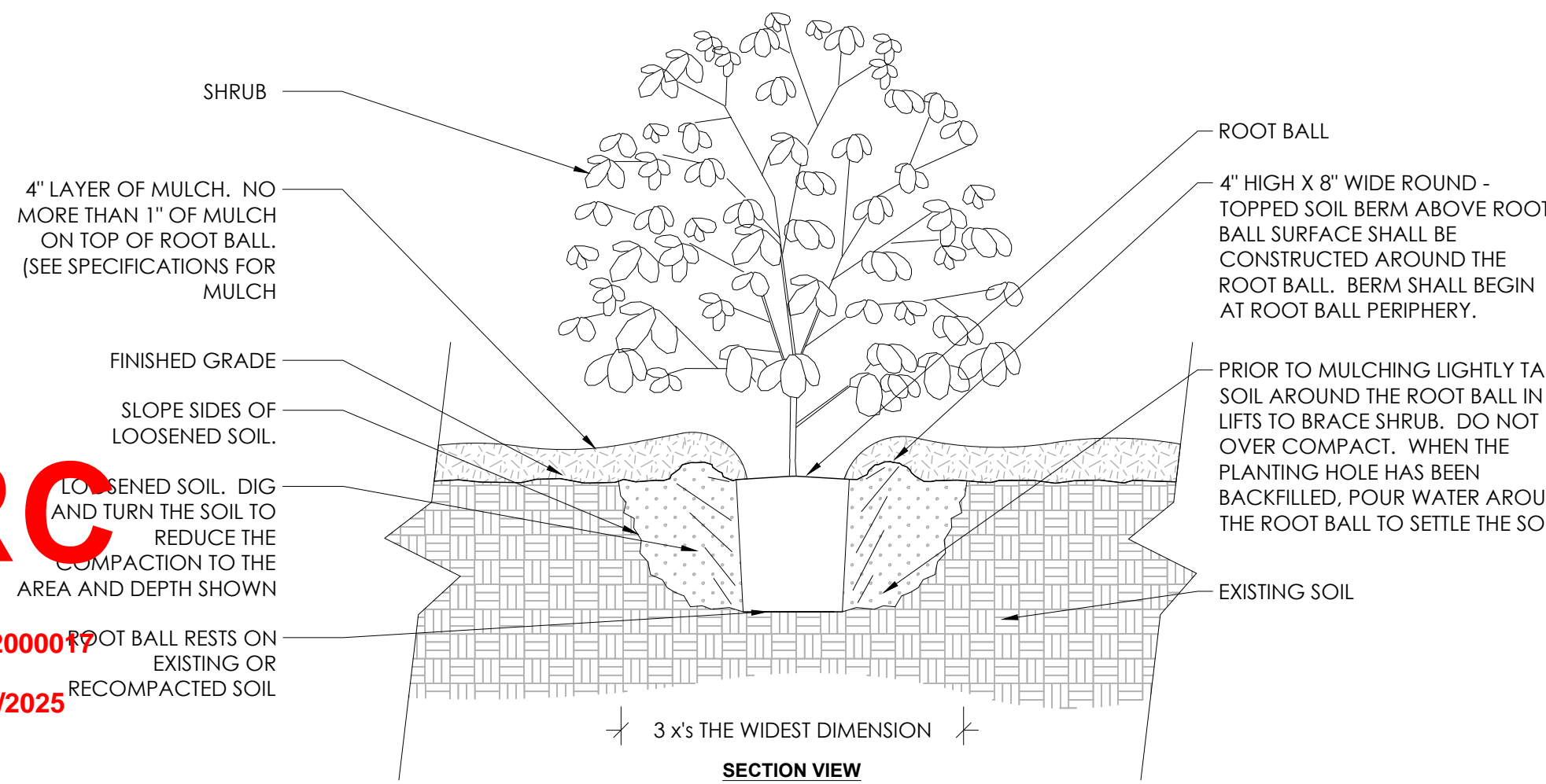


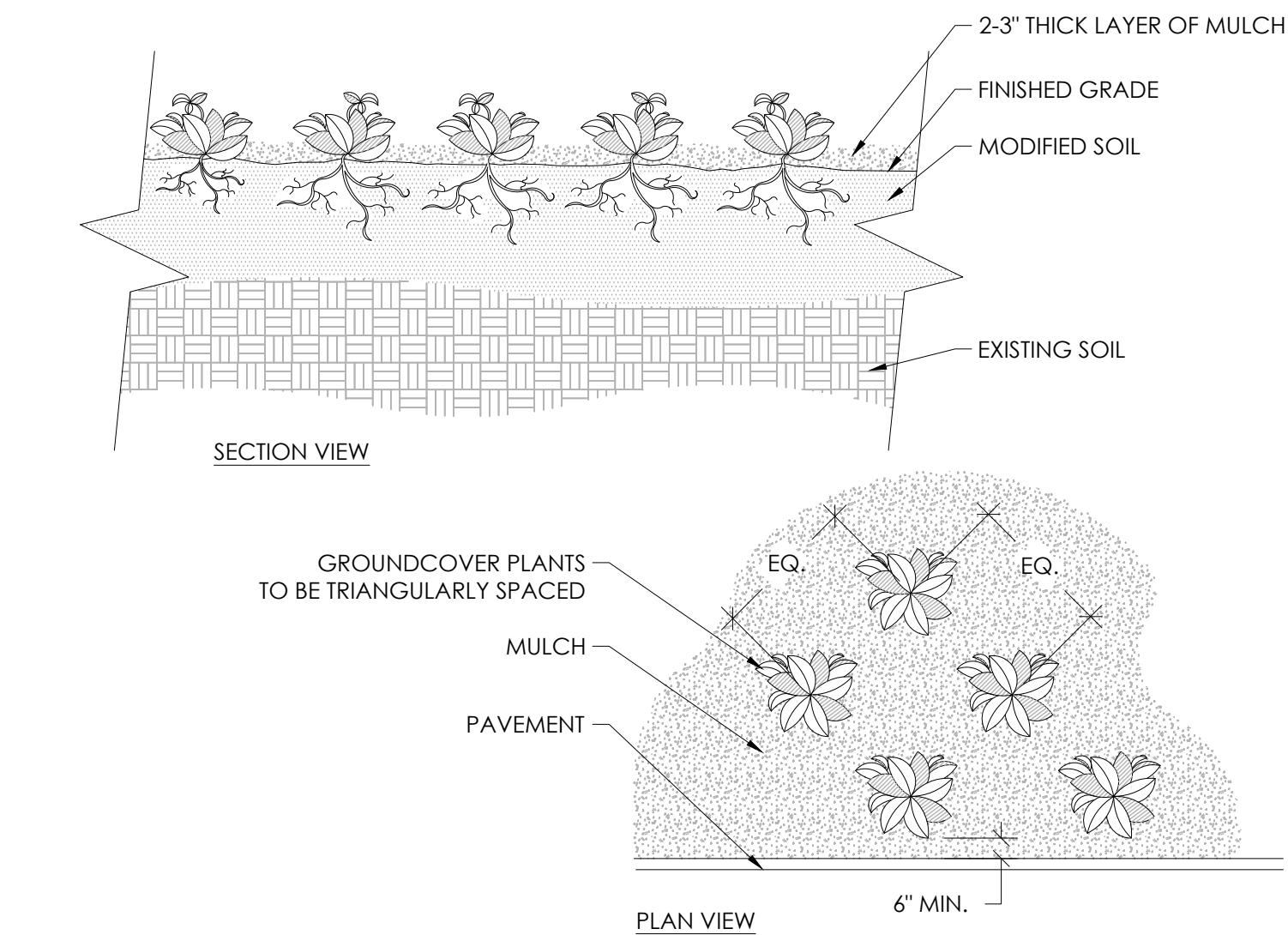
DRC
PZ23-12000017
03/05/2025



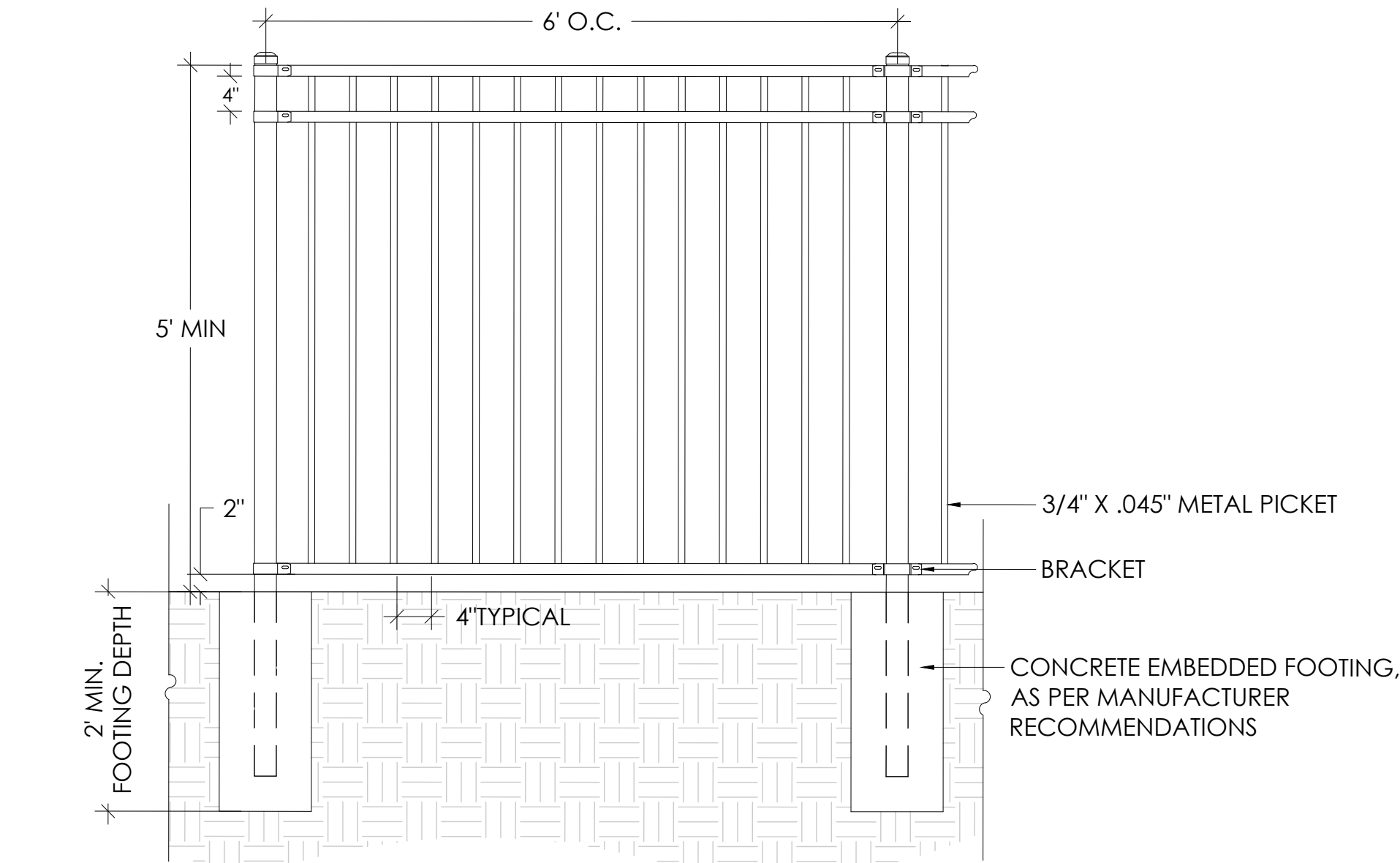
1 TREE PLANTING DETAIL
NOTES:
1. TREES SHALL BE OF QUALITY PRESCRIBED IN CROWN OBSERVATIONS AND ROOT OBSERVATIONS DETAILS AND SPECIFICATIONS.
2. SEE SPECIFICATIONS FOR FURTHER REQUIREMENTS RELATED TO THIS DETAIL.



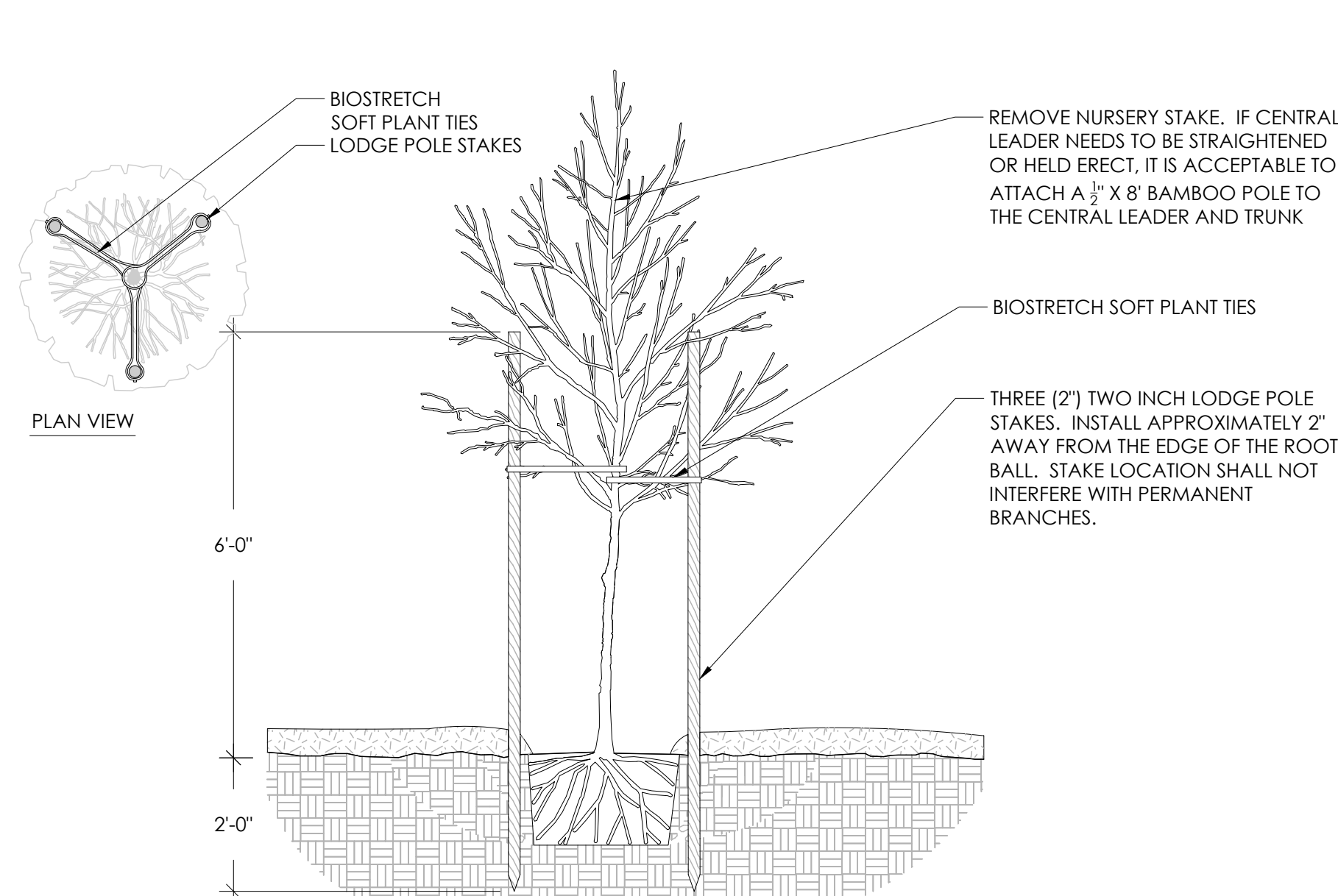
2 SHRUB PLANTING DETAIL
NOTES:
1. SHRUB SHALL BE OF QUALITY PRESCRIBED IN THE ROOT OBSERVATIONS DETAIL AND SPECIFICATIONS
2. SEE SPECIFICATIONS FOR FURTHER REQUIREMENTS RELATED TO THIS DETAIL.



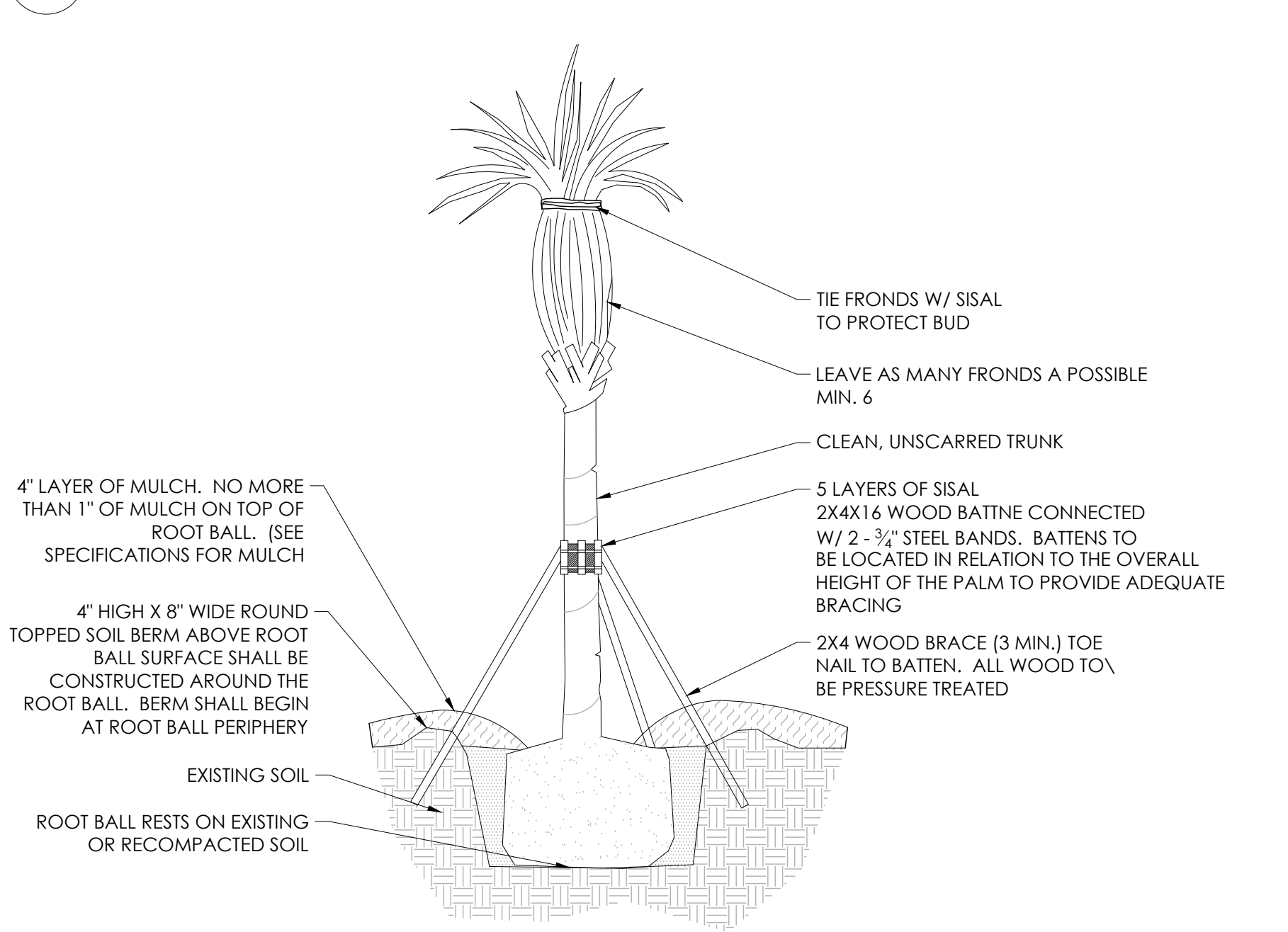
3 GROUNDCOVER
NOTES:
1- SEE PLANTING LEGEND FOR GROUNDCOVER SPECIES, SIZE, AND SPACING DIMENSION.
2- SMALL ROOTS (1/4" OR LESS) THAT GROW AROUND, UP, OR DOWN THE ROOT BALL PERIPHERY ARE CONSIDERED A NORMAL CONDITION IN CONTAINER PRODUCTION AND ARE ACCEPTABLE HOWEVER THEY SHOULD BE ELIMINATED AT THE TIME OF PLANTING. ROOTS ON THE PERIPHERY CAN BE REMOVED AT THE TIME OF PLANTING.
3- SETTLE SOIL AROUND ROOT BALL OF EACH GROUNDCOVER PRIOR TO MULCHING.



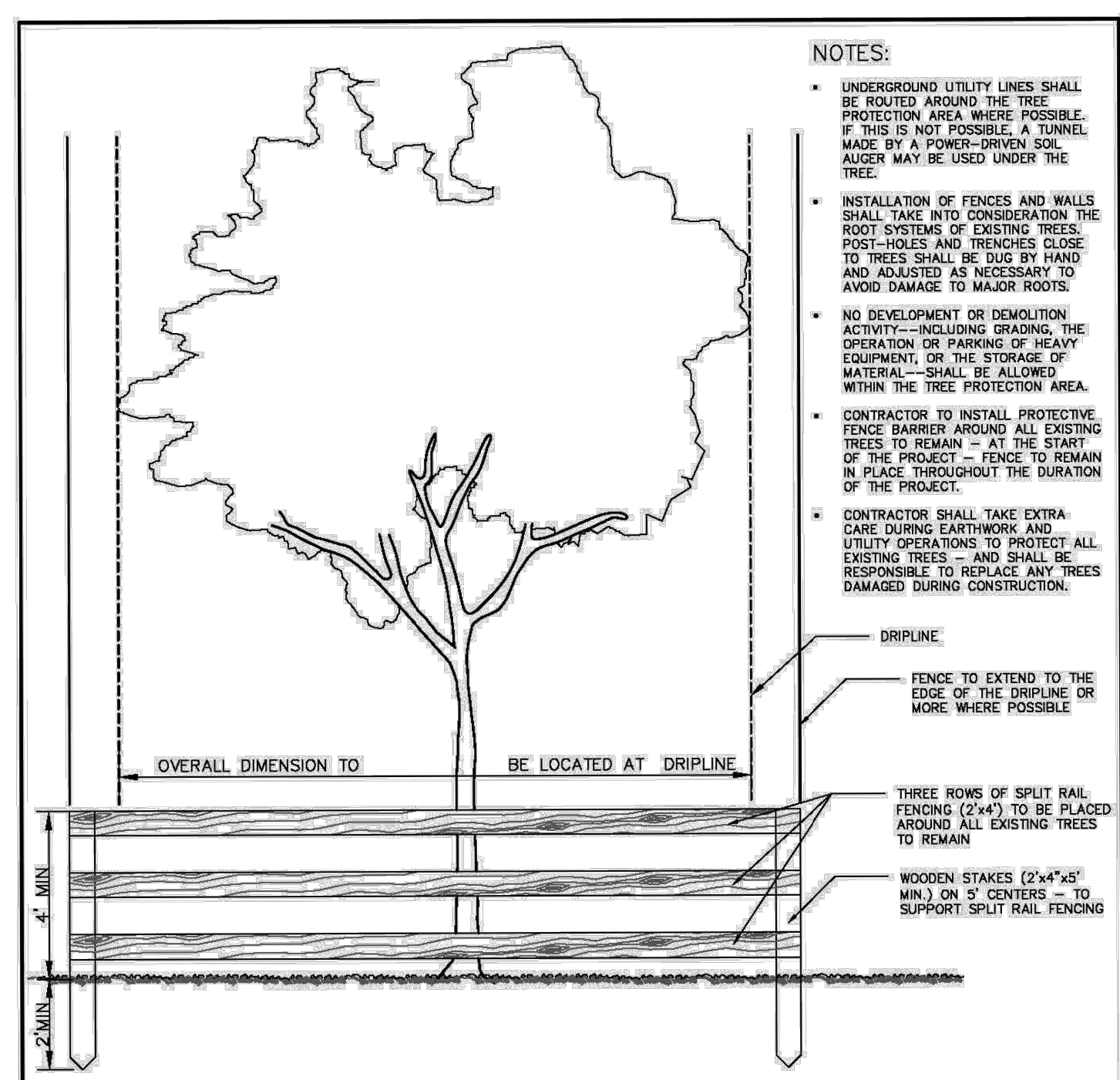
4 PERIMETER FENCE ELEVATION
3/4" = 1'-0"



5 TREE STAKING DETAIL
1/2" = 1'-0"

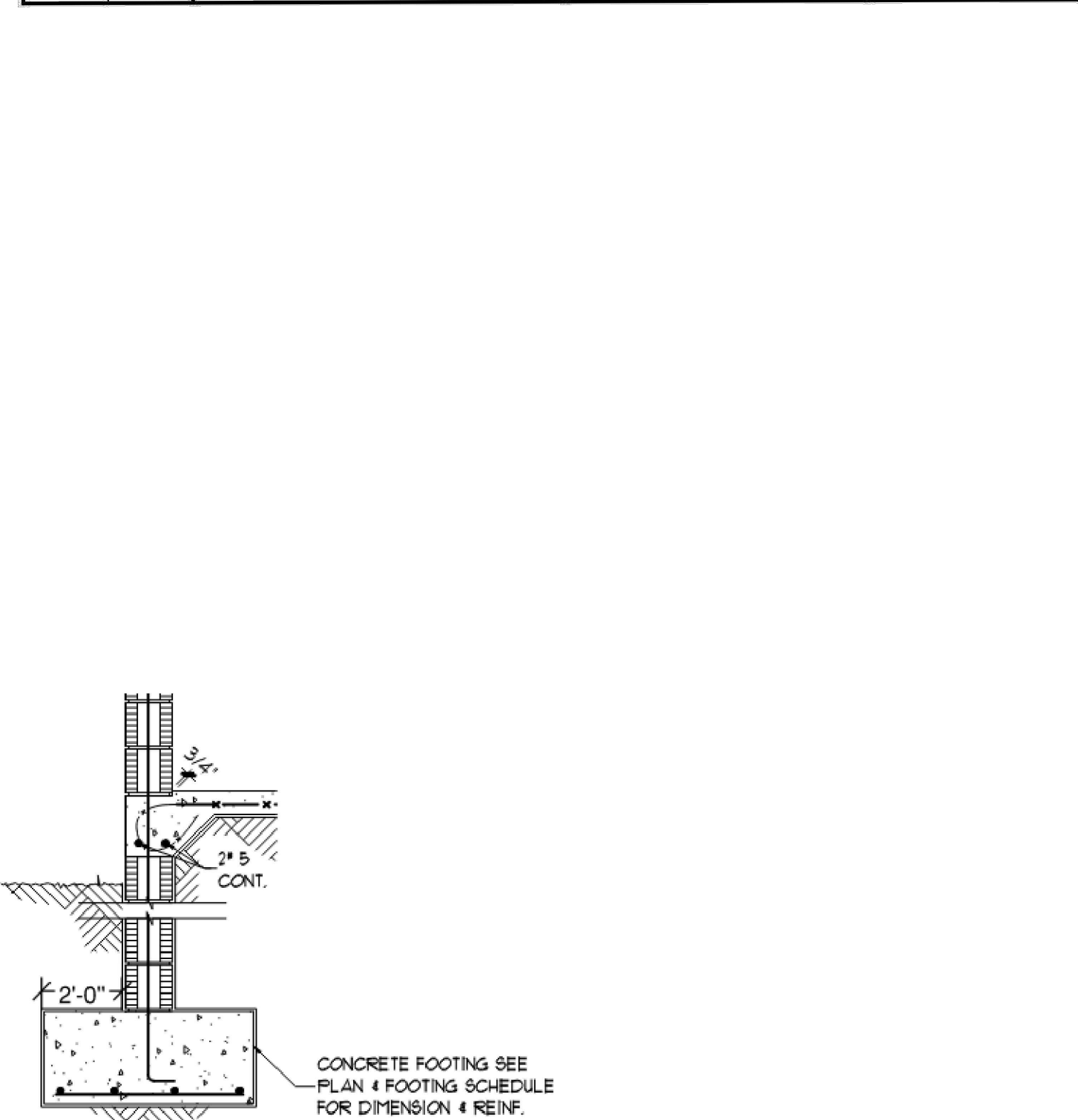


6 PALM STAKING DETAIL
SCALE: 1/4" = 1'-0"



NOTE: BARRIER TO FORM CONTINUOUS CIRCLE AROUND THE TREE OR GROUP OF TREES. SEE LANDSCAPE PLAN FOR LOCATION OF TREES TO REMAIN.

		LANDSCAPE		STANDARDS	
REVISIONS		URBAN FORESTRY CITY OF POMPAÑO BEACH		TREE PROTECTION DETAIL	
BY	DATE				
TCW	04/2010				
AS	09/2021				
		SCALE: N.T.S.		APPROVED BY: _____	
				URBAN FORESTER _____	
				DATE: SEP 2021	
				DWG. NO. 104-1	



CONCEPTUAL FOOTER SECTION
SCALE: N.T.S.

- LANDSCAPE NOTES:**
- ALL PLANTS TO BE FLORIDA #1 QUALITY OR BETTER AS DEFINED IN THE LATEST EDITION OF THE FLORIDA GRADES AND STANDARDS FOR NURSEY PLANTS, UNLESS OTHERWISE NOTED.
 - ALL PLANTING AND SOD AREAS SHALL RECEIVE 100% IRRIGATION COVERAGE FROM AN AUTOMATIC IRRIGATION SYSTEM WITH A RAIN SENSOR.
 - ALL PLANTING BEDS/ ISLANDS SHALL BE FREE OF SHELLROCK, CONSTRUCTION DEBRIS, OR OTHER MISCELLANEOUS DEBRIS, EXCAVATED TO A DEPTH OF 30" OR TO CLEAN NATIVE SOILS, AND BACKFILLED WITH THE SPECIFIED SOIL MIXTURE.
 - ROOT BARRIERS ARE REQUIRED FOR ALL TREES LOCATED WITHIN 10' OF UNDERGROUND UTILITIES.
 - CONTRACTOR IS RESPONSIBLE FOR OBTAINING ALL REQUIRED APPROVALS AND PERMITS FROM LOCAL MUNICIPALITY AND GOVERNING AGENCIES PRIOR TO REMOVAL OF ANY EXISTING VEGETATION OR BEGINNING INSTALLATION.
 - IN THE EVENT OF A CONFLICT BETWEEN THE QUANTITIES SHOWN IN THE PLANT SCHEDULE AND GRAPHICALLY DEPICTED AND LABELED ON THE PLAN, THE PLAN WILL PREVAIL. IF SUCH CONFLICT IS DISCOVERED, CONTRACTOR SHALL CONSULT WITH LANDSCAPE ARCHITECT.
 - ALL TREES PLANTED UNDER OR NEAR OVERHEAD POWER LINES SHALL COMPLY WITH FPL RIGHT TREE, RIGHT PLACE REQUIREMENTS.
 - CONTRACTOR IS REQUIRED TO CALL SUNSHINE 811 TO HAVE ALL UNDERGROUND UTILITIES LOCATED PRIOR TO ANY DIGGING, EXCAVATION, OR UNDERGROUND WORK. IF PROPOSED DESIGN CONFLICTS WITH EXISTING OR PROPOSED UTILITY LOCATIONS, CONTRACTOR SHALL IMMEDIATELY CONTACT LANDSCAPE ARCHITECT TO DEVELOP A SOLUTION FOR THE CONFLICT.
 - PER CITY ORDINANCE 50.02(A) AND 100.35(E), THAT LANDSCAPING MATERIALS OTHER THAN SOD ARE NOT ALLOWED WITHIN 5' OF ANY PORTION OF CITY OWNED UTILITIES WITHIN THE PUBLIC STREET RIGHT-OF-WAY INCLUDING METERS, HYDRANTS, SERVICE LINES, ETC. ADDITIONALLY, NO TREES, SHRUBBERY OR OBSTRUCTION SHALL BE PLACED WITHIN A 3' RADIUS OF A CITY-OWNED SEWER LATERAL CLEANOUT OR WATER AND/OR REUSE METER.

Consultants:

Revisions:
2023/06/12 - Intake
2023/08/16 - Resubmittal #1
2024/01/02 - Resubmittal #2
2024/10/16 - Resubmittal #3
2024/12/11 - Resubmittal #4
2025/01/27 - Resubmittal #5

THE OAKS AT PALM AIRE
Pompano Beach, Florida
MORGUARD

ALWAYS CALL 811 TWO FULL BUSINESS DAYS BEFORE YOU DIG TO HAVE UNDERGROUND UTILITIES LOCATED AND MARKED.

Sunshine811.com

Drawn By: AS/JG/ZK
Drawing #: 1272
File Name: LP_1272.dwg
Date: 01/03/2024

LANDSCAPE DETAILS

SHEET #: LP.30